

# INTERNATIONAL RAILWAY SYMPOSIUM SUSTAINABLE RAILWAY: CONNECTING NATIONS, PRESERVING FUTURES

---

FORUM:  
“INDUSTRIAL COLLABORATION PROGRAM (ICP) AS A TOOL  
TO SUPPORT SUSTAINABLE RAILWAY DEVELOPMENT”





## Panellists: Dr. Sharoul Jambari - TDA

Considering the essence of sustainable railway development as defined earlier, how does the Industrial Collaboration Programme (ICP) contribute to ensuring long-term economic viability, adopting efficient practices, and fostering economic growth within the Malaysian railway landscape?

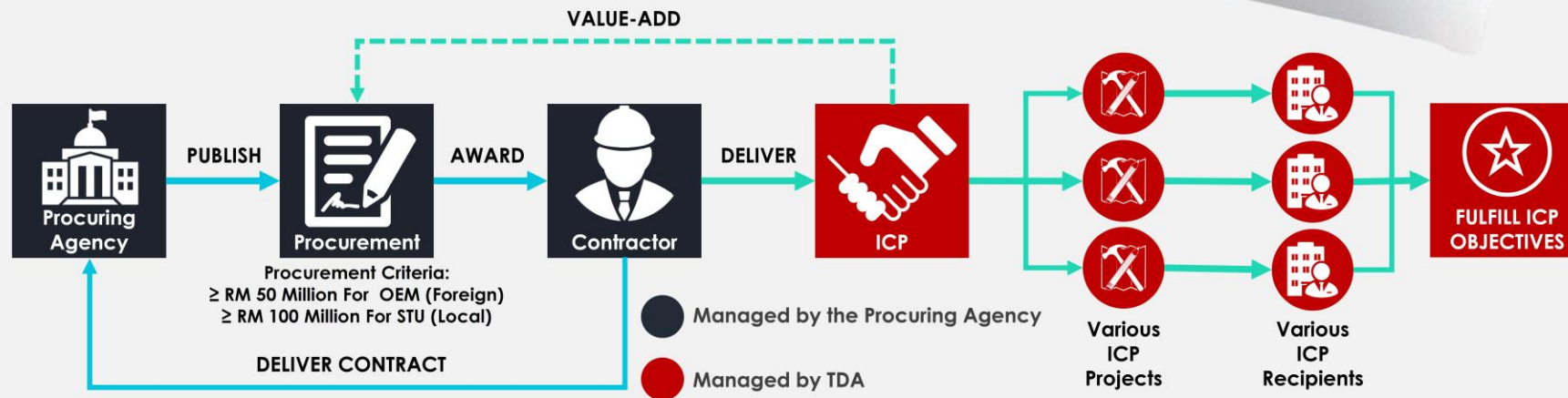
Could you share insights into specific collaborative efforts facilitated by the ICP that align with NTP 2019-2030 and NIMP 2030?





# WHAT IS ICP?

The Industrial Collaboration Programme (ICP) is a government policy owned and published by the **Ministry of Finance (MOF)** involving activities that provide **value-add** to any procurement with **pre-determined criteria** made by the Government of Malaysia or using Federal fund with the most effective cost associated to it.





# Current ICP Implementation - Rail

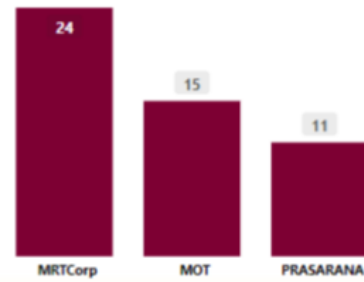
## KEY INSIGHTS

50  
RAIL PROCUREMENTS

349  
ICP RAIL PROJECTS

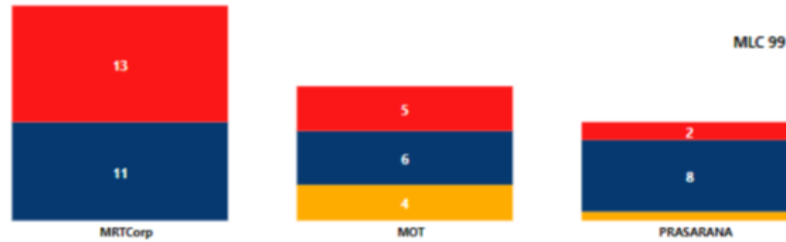
39.44bn  
MANDATORY ICP VALUE

### ICP Programs by Procuring Agency

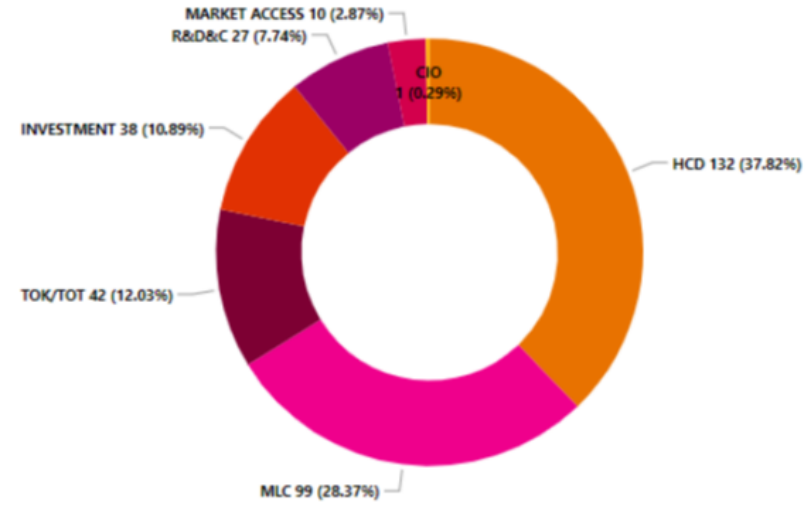


### Programme by Scope

PROGRAM SCOPE ● SERVICES ● SUPPLY ● WORKS



### ICP Projects by ICP Objective

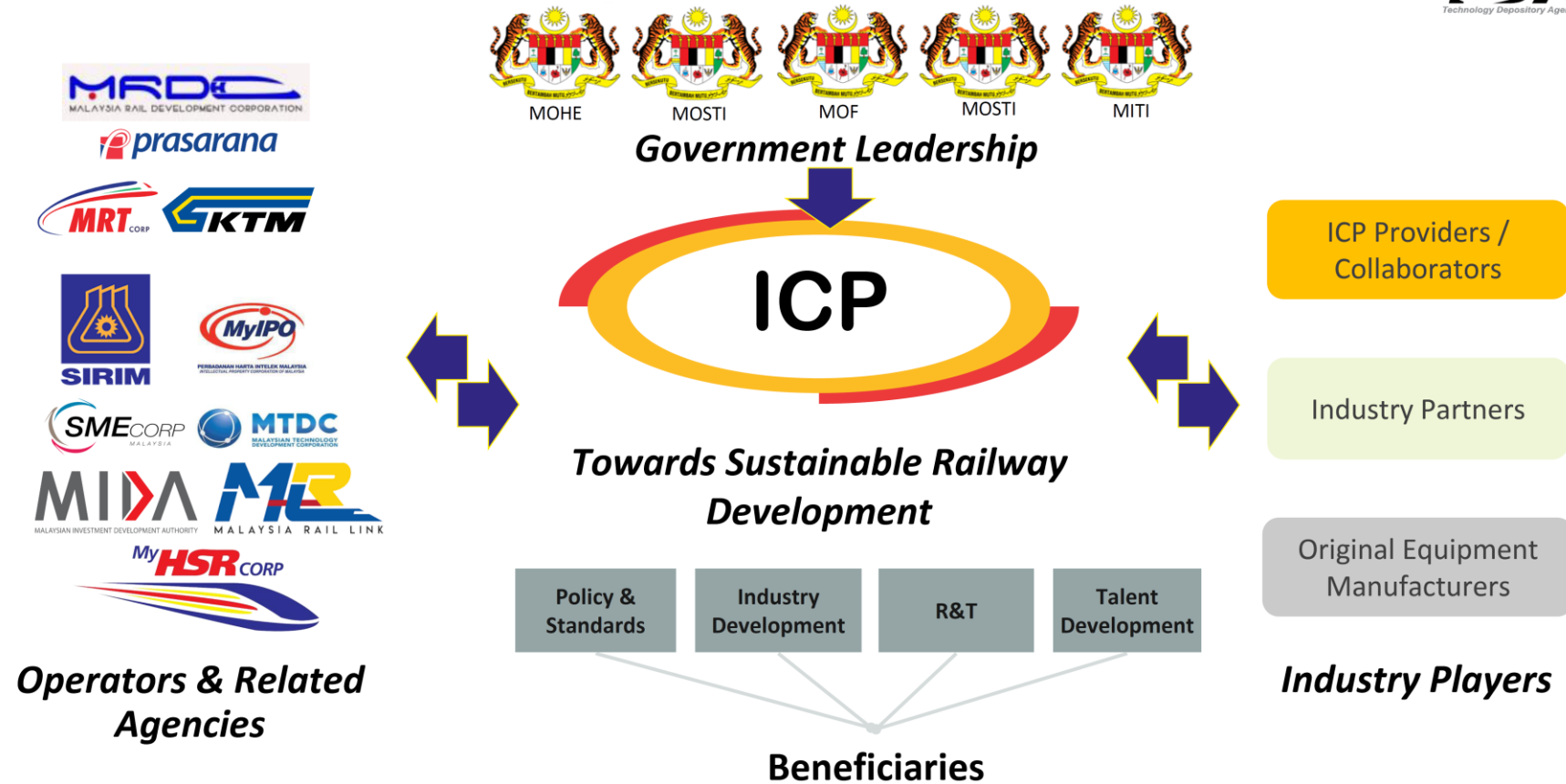


Data as of May 2023 Visualization of ICP Programs with on going projects only.

Source: ICP Intelligence Platform (IIP)



# Cross-cutting Collaboration Model



*Your Preferred Collaboration Partner*



## Panellists: Dr Sharoul Jambari - TDA

How TDA's role is to facilitate technology transfer, managing technology assets, and supporting the growth of technology-based companies. How do collaboration between other industries could support the rail industry and contribute to the sustainability of economic development. Could you share some specific examples or models have shown success in this area.





# KEY SUCCESS FACTORS



*Your Preferred Collaboration Partner!*



# Panellists: YBhg Dato' Dr. Zailani Safari – Adjunct Professor (ICP), NDUM, Malaysia

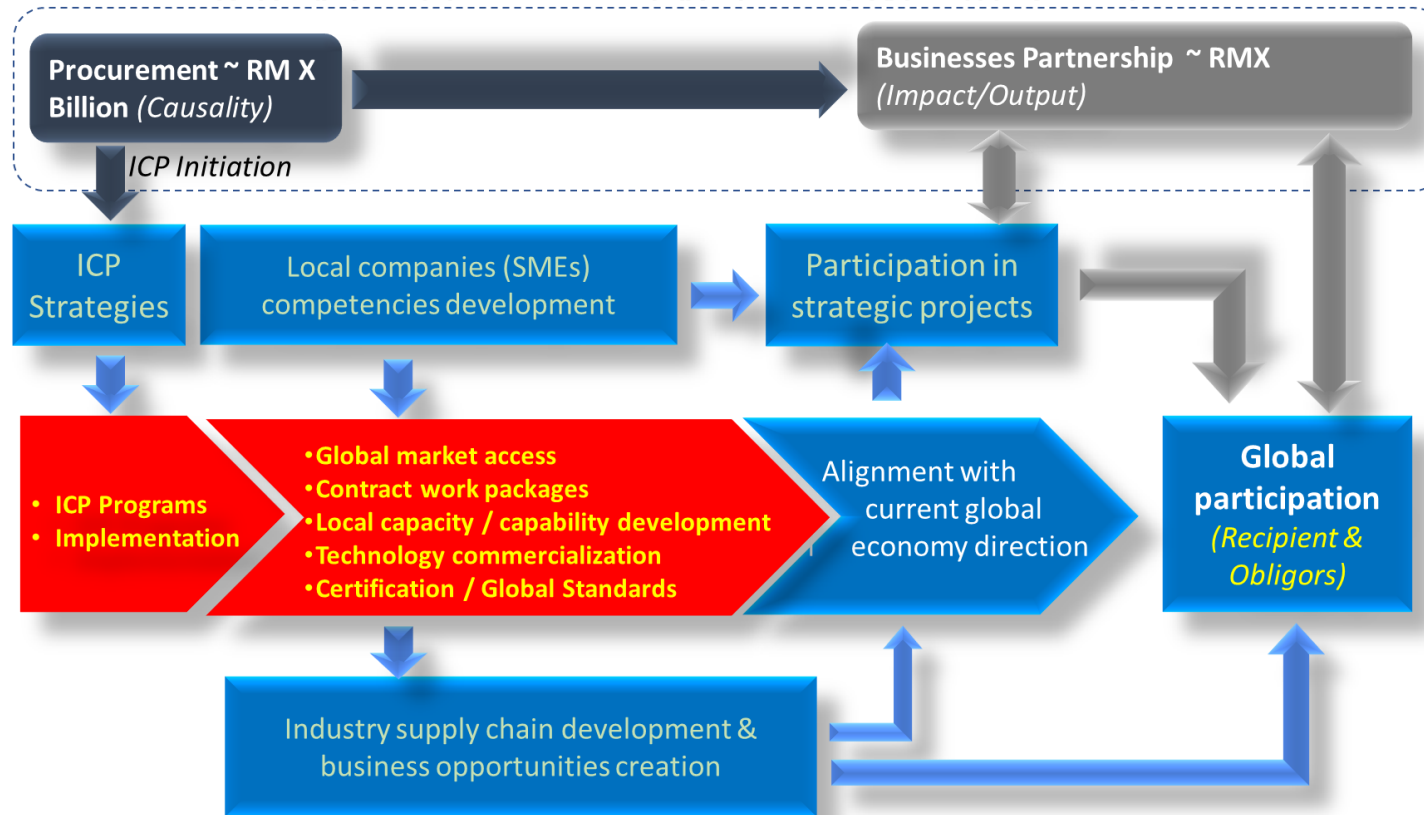
How can the ICP be strategically leveraged to not only meet project requirements but also act as a catalyst for market creation within the Malaysian railway industry?

What specific initiatives or strategies do you believe are essential for stimulating innovation, supporting local businesses, and fostering a dynamic market ecosystem through the ICP?





# ICP: A tool to support National Wealth Creation





# How the tool works?





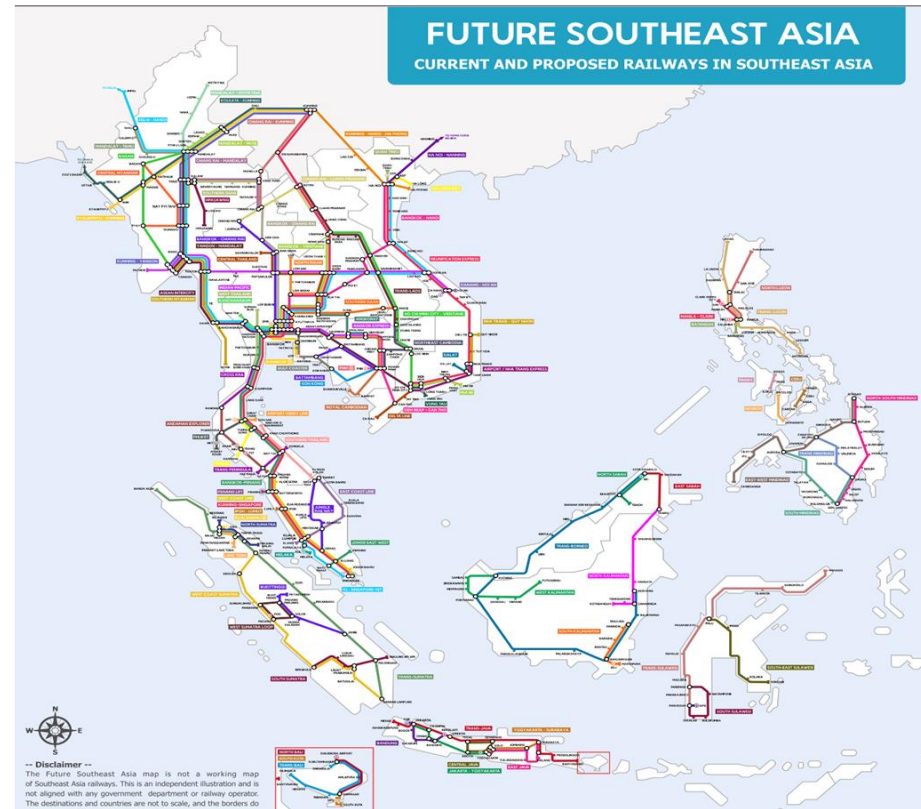
## Key points (from the perspective of railway industry)

- **Railway infrastructure is economy enabler**
  - *Need to have the supporting clusters (MRO, advanced technology development & application, business supports)*
- **It is an effective mode of transportation (quantity, cost and time)**
- **Need to create economy zones at strategic points along the rail network / infrastructure**
  - *To create 'demand-supply' of rail services*
- **Use ICP to create business opportunities**



## What is on the table?

- The current population of South-Eastern Asia is 688,802,559 as of Thursday, November 2, 2023, based on the latest United Nations estimates.
  - Reports suggest that ASEAN is on track to become the world's largest market by 2030, with a predicted influx of investment and business set to benefit several industries.
  - Currently worth US\$2 trillion (fifth largest economy globally), behind the US, China, Japan and Germany. By 2040, the region is expected to account for 4.4% of the global economy
- \* *Indonesia is a growing power house in Southeast Asia. A member of the G20, Indonesia's GDP stands at US\$1 trillion, the largest in the region.*





# Panellists: Mr. Patrick Hwang – MRCB Malaysia

MRCB is one of the prominent ICP provider in the rail industry in Malaysia – would you be able to share your view of a viable economic impact analysis mechanism in your current or future ICP provision to ensure sustainable railway development?

What specific factors does MRCB consider in this analysis, and how do these factors contribute to ensuring the long-term economic sustainability of the railway projects you're involved in?





# 1<sup>st</sup> U-Trough Girder Technology in Malaysia



2040 unit of U-Trough Girder cast and launched for the LRT3 project



Project Owner :



Contractor :



1





## Environmentally Friendly Mosquito Kit



- Installed in **LRT3 project sites** which includes the Centralised Labour Quarters (CLQ) and nearby residential areas.
- Exercised **care for the environment** without the use of harmful pesticides.



Project Owner :



Contractor :



2



## Other Industrial Collaboration Programme (ICP)



Project Owner :



Contractor :



3



# Panellists: Mr. Chelvam Rengasamy– SMH Rail

SMH Rail's role as the ICP recipient, especially in the context of large infrastructure investment – the MRT project, places technology transfer at the forefront. Can you elaborate on the strategies SMH Rail is employing to ensure readiness for integrating advanced technologies?

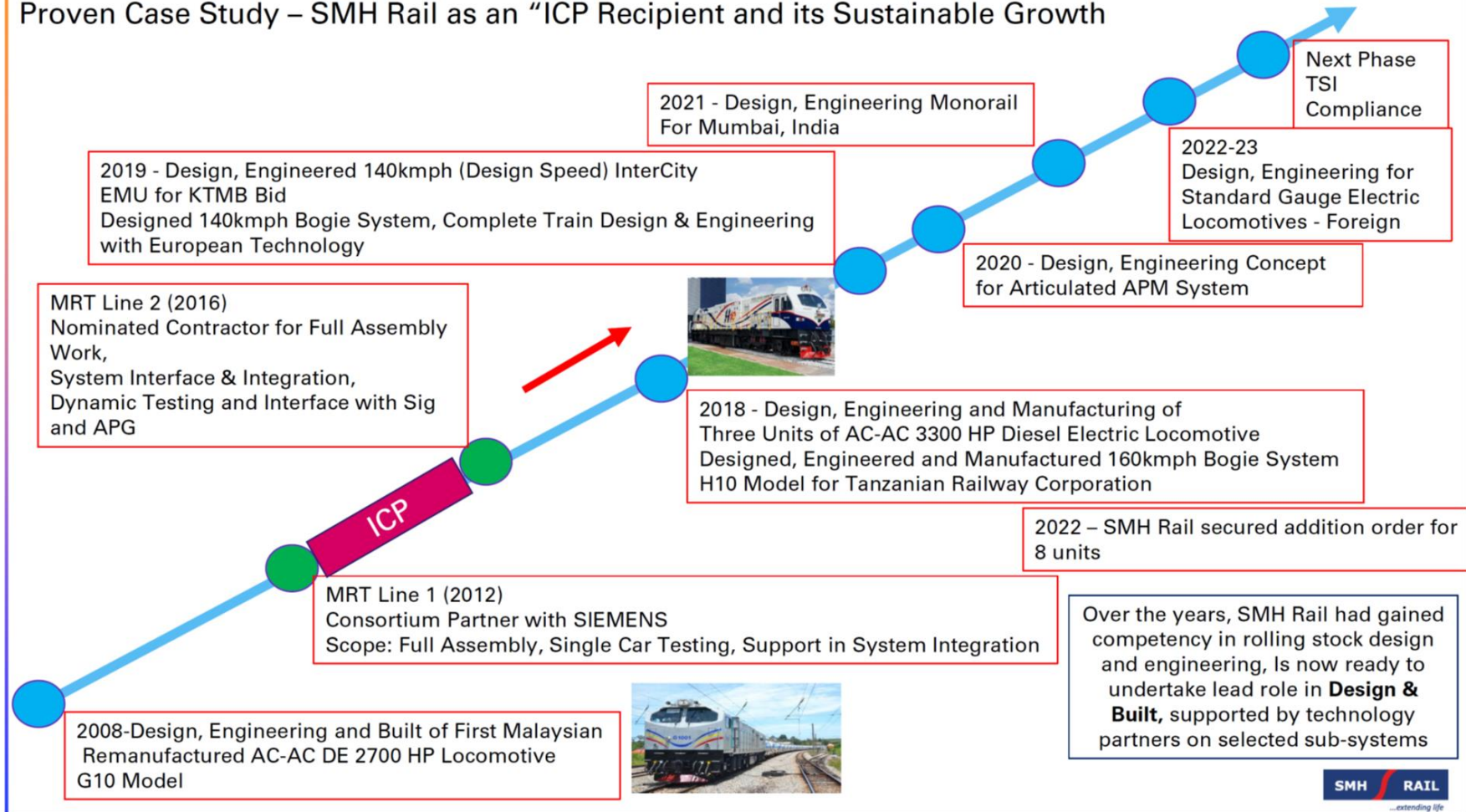
In ensuring the seamless continuity of business operations, what specific measures has SMH Rail implemented to manage the transition and potential challenges associated with incorporating innovative technologies?





# Industrial Collaboration Program (ICP) as a Tool to Support Sustainable Railway Development

## Proven Case Study – SMH Rail as an “ICP Recipient and its Sustainable Growth



Over the years, SMH Rail had gained competency in rolling stock design and engineering. Is now ready to undertake lead role in **Design & Built**, supported by technology partners on selected sub-systems



# Panellists: Mr. Mohd Asroll Mansor – MMC Engineering

Recognizing that MMC Engineering, as a significant ICP provider, possesses extensive capabilities and capacities, while SMEs may have limitations, how do you see its role in **scaling collaborations with these SMEs through the ICP?**

Also, in supporting **environmental sustainability by reducing carbon footprint**, as an ICP provider, do you consider contributing towards the national green agenda or engaging in carbon offsetting initiatives? Could you provide specific examples of initiatives or strategies that MMC Engineering has implemented or plans to implement in future via ICP.





**“PROSPER TOGETHER”**







**ANY QUESTIONS?**